

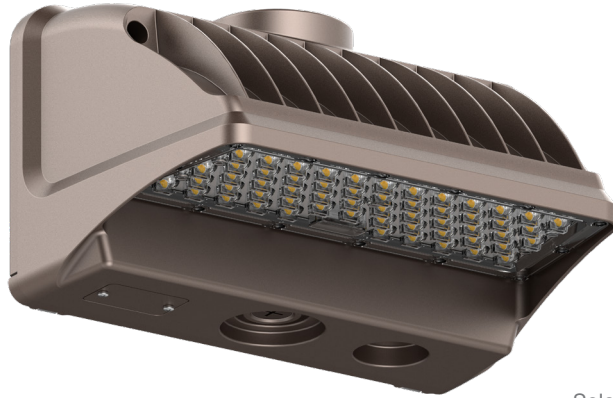
WPX SERIES Outdoor Lighting

WPX-42W-MCTP
LED CUT-OFF WALL PACK

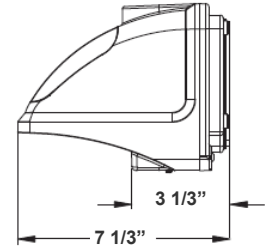
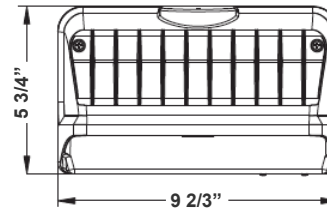
Customer Name: _____

Project Name: _____

Note: _____ Type: _____



Selection:



9 2/3" (W) x 5 3/4" (H) x 7 1/3" (D)

LED Wall Pack Light series can be widely used as Exterior or Interior LED lighting for Hotels, Garages, Commercial Buildings, Public areas, Schools and Hospitals, etc.

Features

- High Light Transmittance, Anti-UV and Fire Resistant PC Lens
- 7-Year Warranty
- Die-Cast Aluminum With Powder Coat Finish (Dark Bronze)
- Multi CCT and Power (Switches are inside fixture)

Technical Specifications

Electrical:

- Voltage: 120-277VAC 60Hz
- Wattage: 11W/ 21W/ 32W/ 42W
- Power Factor: >0.95
- Efficacy: 135 LPW

Mechanical:

- Die-Cast Aluminum With Powder Coat Finish (Dark Bronze)
- High Light Transmittance, Anti-UV and Fire Resistant Shatterproof PC Lens
- Operating Temperature: -4°F to 104°F
- IP 65
- Wet Location
- 7-Year Warranty
- Full Cutoff, Dark sky Compliant

Lighting:

- Dimming: 0~10V Dimmable
- Multi CCT and Power (Switches are inside fixture)
- The Type III Distribution Is Used for Wide WalkWays, on Ramps and Entrance Roadways, As Well As Other Long, Narrow Lighting
- Total Lumens: 5670LM Max.
- Color Temperatures: 3000K/ 4000K/ 5000K
- Color Rendering Index: CRI ≥ 80
- Rated life: 70,000 Hrs

Applications:

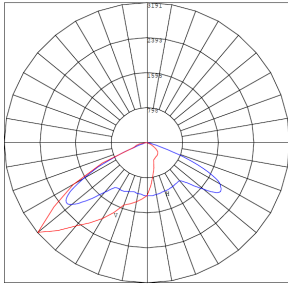
- LED Wall Pack Light series can be widely used as Exterior or Interior LED lighting for Hotels, Garages, Commercial Buildings, Public areas, Schools and Hospitals, etc.

Other Models:

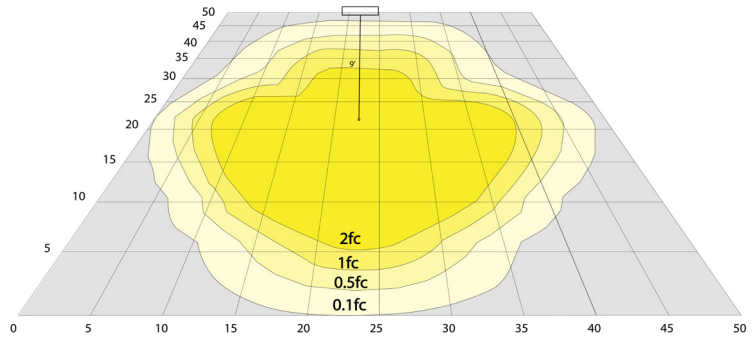
- 80W | 10800LM | WPX-80W-MCTP



Photometrics: WPX-42W-MCTP



BUD Rating: B0-U0-G1



Area 45'x 50' Mounting Height: 9'

Other Views:



Side View



Front View



Back View

Performance Table: WPX-42W-MCTP

MODEL NO.	Wattage	Voltage	Lumens	Color Temp.	BUG Rating	LPW
WPX-42W-MCTP	11W	120~277V	1485LM	3000K 4000K 5000K	B0-U0-G1	135
	21W		2835LM			
	32W		4320LM			
	42W		5670LM			

Sample Ordering

Model Wattage Color Temp.

WPX - 42W - MCTP

Factory-Installed Options:

- Blank = No Option For Accessories
- OPT-EM-OD1INT= INTERNAL EMERGENCY BACKUP BATTERY
- OPT-SEN-3MRLV-5= PROGRAMMABLE MICROWAVE BI-LEVEL
- OPT-CLR-85= COLOR PAINT
- OPT-TRS-T20= TAMPER RESISTANT SCREW
- OPT-PC-B = PHOTOCELL 120-277V
- WEC-8RC = OPTIONAL REMOTE

FACTORY-INSTALLED OPTIONS:



OPT-EM-OD1INT



OPT-SEN-3MRLV-5



WEC-8RC



OPT-PC-B

Example:

1. WPX-42W-MCTP
2. WPX-42W-MCTP
OPT-EM-OD1INT

(FOR WPX 42W MCTP FIXTURE 120-277V)

(FOR WPX 42W MCTP FIXTURE 120-277V)
(INTERNAL EMERGENCY BACKUP BATTERY)

