

LW360 SERIES Outdoor Lighting

LW360-40W-30K
LW360-40W-40K
LW360-40W-50K

Customer Name: _____

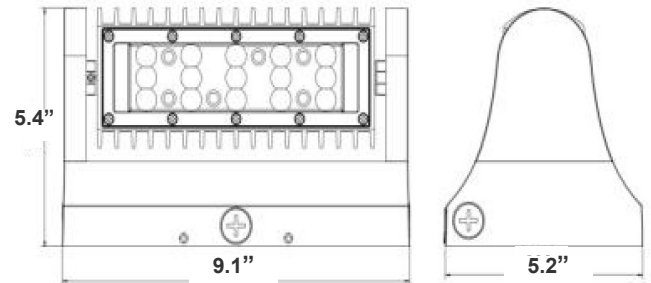
Project Name: _____

Note: _____

Type: _____



Selection:



5.4"(H) x 5.2"(W) x 9.1"(L)

Ideal for general site lighting, alleys, loading docks, doorway, pathway, and parking areas.

Features

- Three 1/2" Threaded Knockouts: 1 Bottom. 1 On Each Side
- TIR Optic Lens - TYPE II
- Die-cast aluminum housing with powder coat finish (Dark Bronze or White)
- 7-Year Warranty

Technical Specifications

Electrical:

- Voltage: 120-277VAC 60Hz
- Wattage: 40W
- Power Factor: >0.95
- Efficacy: 135 LPW

Mechanical:

- Die-Cast Aluminum With Powder Coat Finish (Dark Bronze)
- TIR Optic Lens - TYPE II
- Includes Mounting Hardware
- Operating Temperature: -40°F -104°F
- Three 1/2" Threaded Knockouts: 1 Bottom. 1 On Each Side
- 7-Year Warranty
- IP65, Suitable for Wet Locations
- Light Head rotates 350°

Lighting:

- Chip: Lumileds LEDs
- TIR Optic Lens - TYPE II
- Total Lumens: 5400LM
- Color Temperatures: 3000K/ 4000K/ 5000K
- Color Rendering Index: CRI ≥ 80
- Beam Angle: 60°
- Rated life: 70,000 Hrs

Applications:

- General site Lighting
- Alleys
- Loading docks
- Doorways
- Pathways
- Parking areas

Other Models:

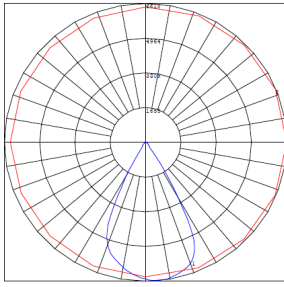
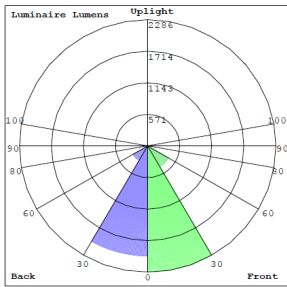
• 25W | 3375LM | LW360-25W-30K
• 25W | 3375LM | LW360-25W-40K
• 25W | 3375LM | LW360-25W-50K

• 60W | 8100LM | LW360-60W-30K
• 60W | 8100LM | LW360-60W-40K
• 60W | 8100LM | LW360-60W-50K

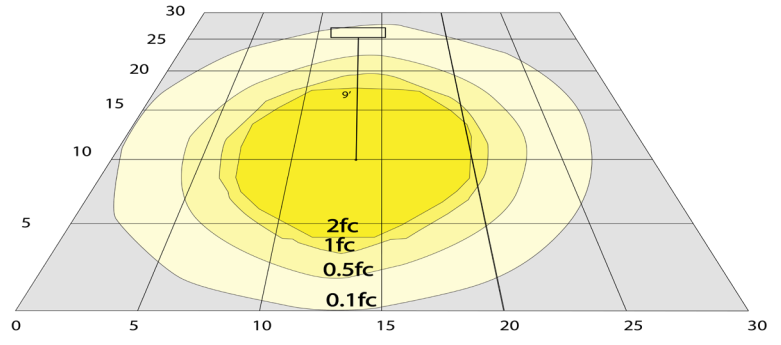
• 80W | 10800LM | LW360-80W-30K
• 80W | 10800LM | LW360-80W-40K
• 80W | 10800LM | LW360-80W-50K



Photometrics: LW360-40W



BUG Rating: B3-U2-G1

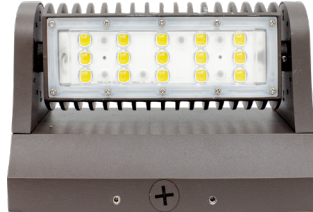


Area 30'x 30' Mounting Height: 9'

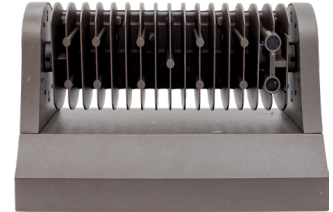
Other Views:



Side View



Front View



Back View

Performance Table: LW360-40W

MODEL NO.	Wattage	Voltage	Lumens	Color Temp.	BUG Rating	LPW
LW360-40W-30K	40W	120~277V	5400LM	3000K	B3-U2-G1	135
LW360-40W-40K	40W	120~277V	5400LM	4000K	B3-U2-G1	135
LW360-40W-50K	40W	120~277V	5400LM	5000K	B3-U2-G1	135

Sample Ordering

Model Wattage Color Temp.

LW360 - 40W -
 3000K
 4000K
 5000K

Accessory:

Blank = No Option For Accessories

LW360-SH1= SHROUD FOR LW360 SERIES, BRONZE FINISH

Factory-Installed Options:

Blank = No Option For Accessories

OPT-EM-LW360= EMERGENCY BACKUP BATTERY, BACK BOX

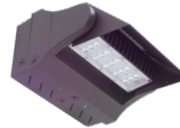
OPT-SEN-LW360-3MRLV-5= PROGRAMMABLE MICROWAVE BI-LEVEL

OPT-CLR-85= COLOR PAINT

OPT-LW360-PC-B = PHOTOCELL 120-277V

WEC-7RC = OPTIONAL REMOTE

ACCESSORY:



LW360-SH1
SHOWN WITH EM BOX

FACTORY-INSTALLED OPTIONS:



OPT-EM-LW360
SHOWN WITH MOTION SENSOR



WEC-7RC



OPT-LW360-PC-B



OPT-SEN-LW360-3MRLV-5

Example:

1. LW360-40W-30K

(FOR LW360 40W 3000K FIXTURE 120-277V)

2. LW360-40W-30K
LW360-SH1

(FOR LW360 40W 3000K FIXTURE 120-277V)
(SHROUD FOR LW360 SERIES, BRONZE FINISH)

3. LW360-40W-30K
LW360-SH1
OPT-EM-LW360

(FOR LW360 40W 3000K FIXTURE 120-277V)
(SHROUD FOR LW360 SERIES, BRONZE FINISH)
(EMERGENCY BACKUP BATTERY, BACK BOX)

