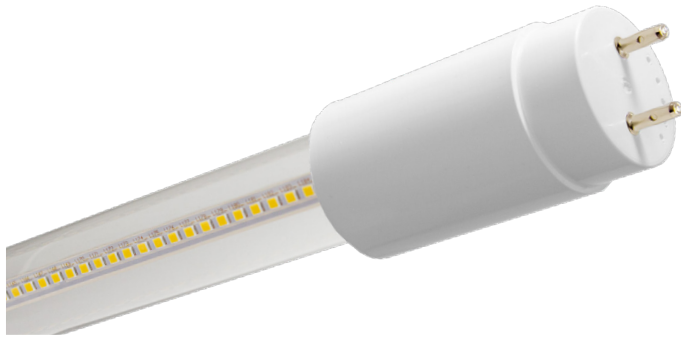


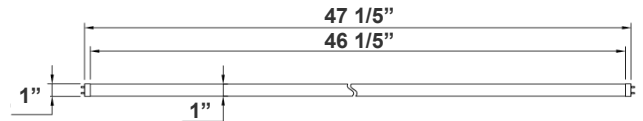
T8 SERIES COMMERCIAL INDOOR LIGHTING

T8-EZX-TB-4FT-12-18W-40K-C
T8-EZX-TB-4FT-12-18W-50K-C



Crystal Glass T8 Tube switches from fluorescent tubes to LED, giving more cost efficiency by providing the same amount of lumen output with less energy consumption. Type B single end and Type A+B are designed for different retrofit projects. 350° beam angle glass The LED tube offers a soft and bright light distribution. Stable quality out of mass automated production.

Customer Name: _____
Project Name: _____
Note: _____ | Type: _____



47 1/5"(L) X 1" (D)

Features

- X-GEN TYPE B , AC Direct (Ballast Override)
- Connect One End or Both Ends (Dual Function)
- 5-Year Warranty
- Glass Lens

Technical Specifications

Electrical:

- Voltage: 120-277V; 50/60Hz AC
- Power Factor: >0.90
- THD: <20%
- Wattage: 12W/15W/18W
- Efficacy: 120 LPW

Lighting:

- Dimming: Non Dimmable
- Total Lumens: 2160LM Max.
- Color Temperatures: 4000K/5000K
- Color Rendering Index: CRI ≥ 80
- Beam Angle: 120°

Mechanical:

- Base Type: G13
- Glass tube: Better Transparency and Thermal Conductivity than Plastic
- Clear Glass
- Ambient Operating Temperature: -13°F to 113°F
- Rated life: 50,000 hrs
- IP Rating: IP20 (Indoor)

Applications:

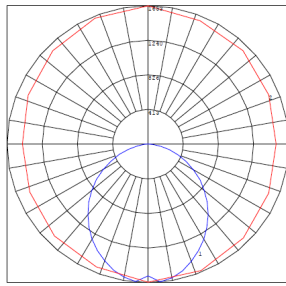
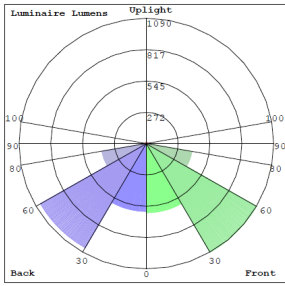
- Direct Fit 4 T8 LED tubes do not burn out easily and provide bright and even lighting to schools, office spaces, retail stores and storage rooms.

Other Models:

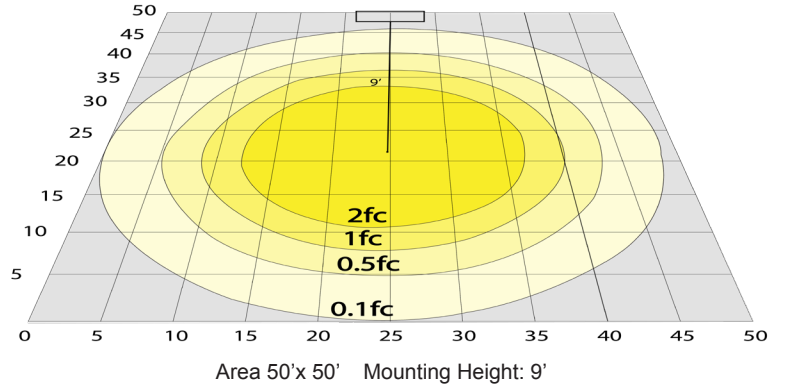
- 18W | 2160LM | T8-EZX-TB-4FT-12-18W-40K-F
- 18W | 2160LM | T8-EZX-TB-4FT-12-18W-50K-F



Photometrics: T8-EZX-TB-4FT-12-18W-C



BUG Rating: B2-U2-G1



Other Views:



Close-up View



End View



Socket View

Performance Table: T8-EZX-TB-4FT-12-18W-C

MODEL NO.	Wattage	Voltage	Lumens	Color Temp.	BUG Rating	LPW
T8-EZX-TB-4FT-12-18W-40K-C	12W	120-277V	1440LM	4000K	B2-U2-G1	120
	15W		1800LM	5000K		
T8-EZX-TB-4FT-12-18W-50K-C	18W		2160LM			

Sample Ordering

Model Material Size Min. Max. Watt Color Temp. Lens Type

T8 - EZX - TB - 4FT - 12 - 18W - [] - C

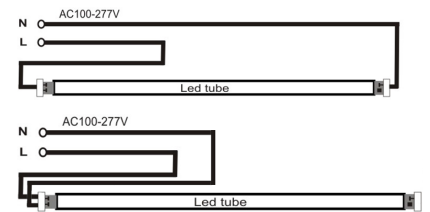
40K = 4000K
50K = 5000K

Example:

1. T8-EZX-TB-4FT-12-18W-40K-F

(FOR 18W 4000K T8 4FT TUBE LAMP 120-277V)

WIRING DIAGRAM:



Other Models: T8-EZX-TB-4FT-12-18W-F (Frosted Model)



Close-up View



End View



Socket View